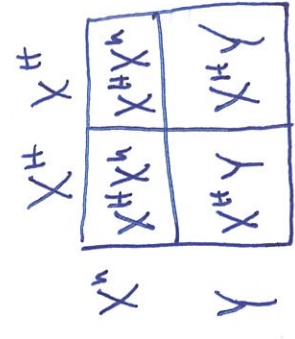


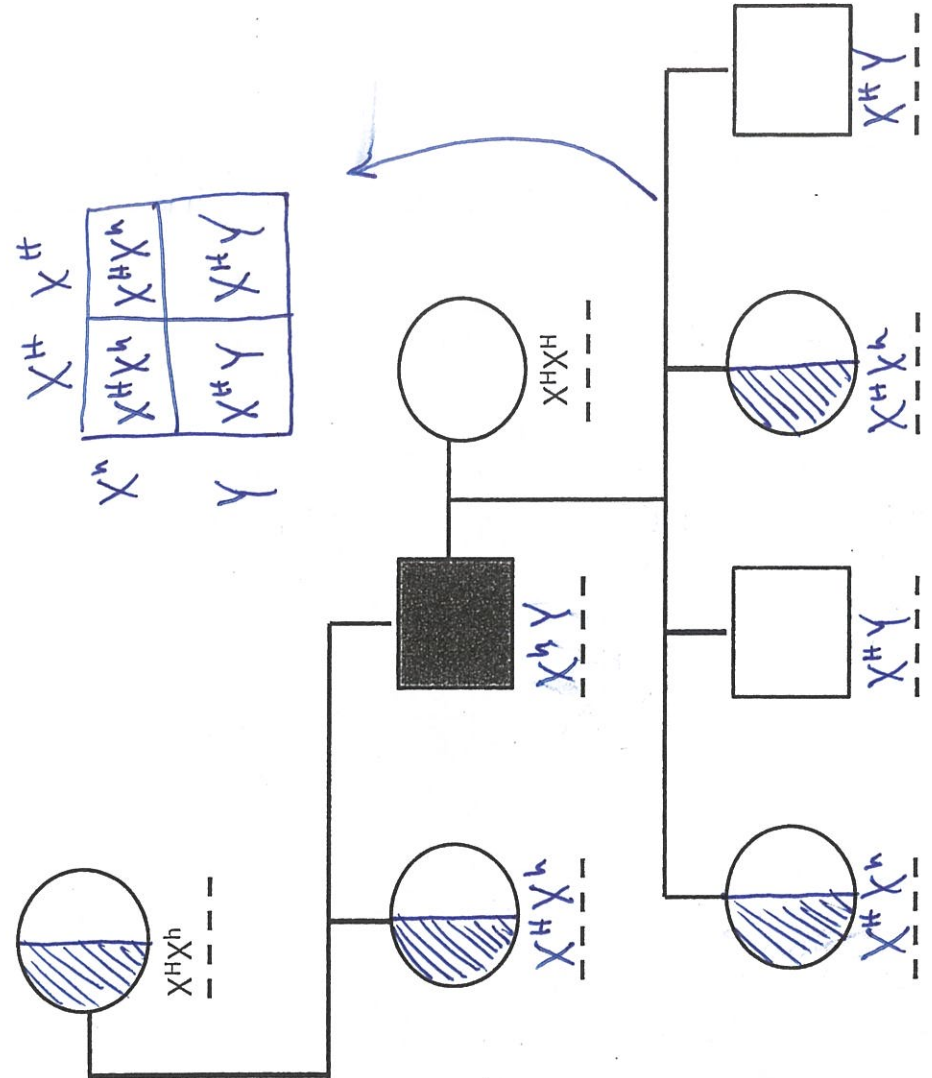
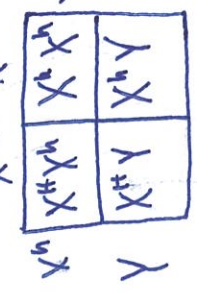
NAME: _____

Linked Recessive Trait (Hemophilia)

- Create punnett squares to show offspring outcome.
- Assume each possible outcome will occur (4 offspring/generation)
- Record all genotypes in space below.



- Complete shading where necessary.

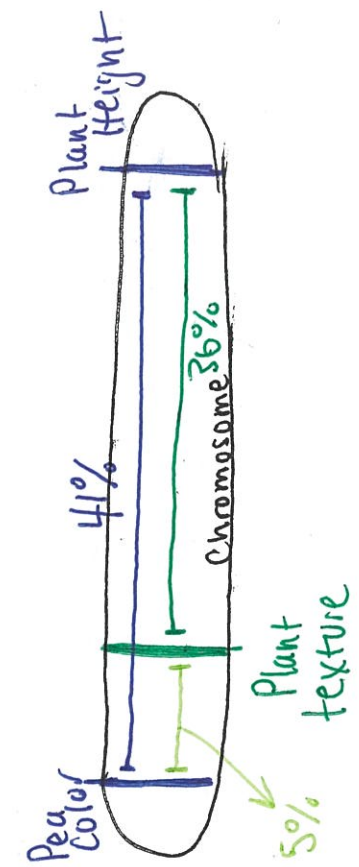


Linked Genes:

Trait 1 Trait 2 Recomb. Freq

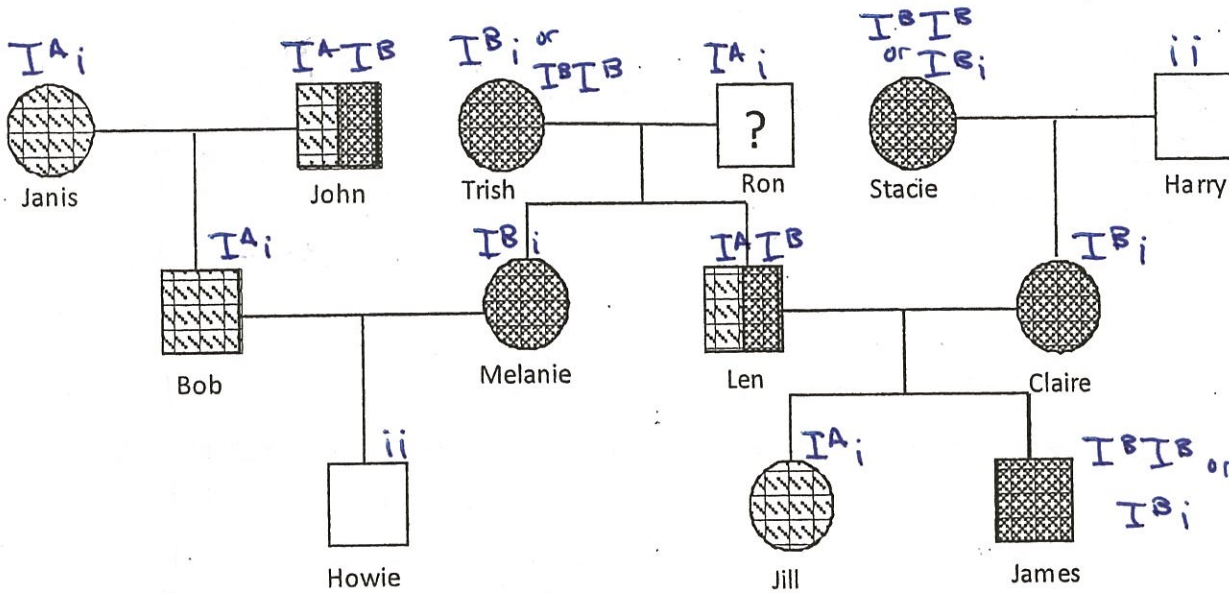
- Texture • Pea Color
- Texture • Plant height
- Pea Color • Plant height

Gene Map of Chrom. w/ 3 diff. traits



BLOOD TYPING/PEDIGREE ACTIVITY

Instructions: Using the pedigree below, answer the following questions regarding this family.



1. Sometimes, in order to figure out the blood types of parents, it is necessary to do all of the possible crosses to determine the possibilities. In the squares below, determine all of the possible blood combinations for the following parents and then determine which ones COULD be correct and write them in the pedigree and in the chart on the next page

Trish and Ron: There are four possible combinations of blood types. Cross all possible combinations of type A and B to determine Trish and Ron's type. Look at Len and Melanie's type to help you decide which are right. There are 2 possible types for Trish

(Ron) \rightarrow $IA \quad IA$ $IA \quad IA$ $IA \quad i$ $IA \quad i$

IB	$IAIB$	$IAIB$	IB	$IAIB$	IBi	IB	$IAIB$	IBi
	IAi	IAi		IAi	ii		$IAIB$	IBi

Trish \rightarrow NO NO Possibly

Stacie and Harry: There are two possible blood type combinations of blood types. Cross all combinations of Types B and O to determine Claire's type. Hint: look at Claire's children to help you decide which is right! There are two possible types for Stacie

(Stacy) \rightarrow $IB \quad IB$ $IB \quad i$

i	IBi	IBi	i	IBi	ii
	IBi	IBi		IBi	ii

(Len) \rightarrow $IA \quad IB$

Len and Claire:

After you determine Claire's blood type, use hers and Len's to determine Jill and James. There are two possibilities for James

IB	$IAIB$	$IBIB$
	IAi	IBi

(Claire) \rightarrow